



CIB NEWS ARTICLE

International Council for Research and Innovation
in Building and Construction

Providing a global network for international exchange and cooperation in research and innovation in building and construction, in support of an improved building process and of improved performance of the built environment.

January 2006

From the General Secretariat

CIB Membership Development in 2005

The Annual CIB Membership Development for 2005 is presented in this News article with some comparative data for the period 2003-2004.

An explanatory text to the presented data is included as an annex.

Some General Conclusions

- CIB has been losing members again in 2005.
- Most membership cancellations have again been registered in Europe.
- In 2005, we register 3 new Full Members. In fact this is one upgrade from Associate Member to Full Member FM3 and two downgrades from FM2 to FM3. The cancellation of 4 Full Members is based on 2 terminations and the 2 downgrades as specified above. (see further text below figure 2).

As described in previous years, this trend can partly be explained by the following:

- The worldwide economic recession has resulted in re-orientations and cuts in research funding for many organisations active in Research in Building and Construction.
- In Europe, the EU is now funding International Networks, sometimes with objectives similar to CIB's.
- Many of the cancellations, especially in the AM category, have taken place in organisations where only 1 person was active in CIB. In many cases, this person has been CIB member for several decades and after his retirement or when he leaves the organisation for whatever other reason, the membership is not renewed.

The same trends seem to be still prevailing among some other International Research and/or Networking Organisations, similar to CIB.

Some positive observations:

- Despite again an annual fee increase of 10% for members in category AM2 (Special Associate Member level 2 for Universities) as decided by

the General Assembly 2001, no higher rate of cancellations have been registered among Universities.

Future Perspectives

Within the CIB Strategy 2004-2007 there is now a strong emphasis being placed upon a Membership Retention and Acquisition programme. The Acquisition Programme will focus on some targets including China, Universities in the USA, French speaking countries and Turkey as a potential gate to the Middle East.

Included in the Membership Retention activities are for example the redesign of the CIB website, modernisation of the Newsletter and various members' satisfaction surveys that are being carried out.

The CIB Student Chapters' activities are gaining increasing momentum. It is expected that they will lead to a change in the age structure of the CIB membership and contribute to a positive membership development in the future.

We must remain aware however that it will take some time until such measures will produce effects.

Comments on Data presented in this Document

The total number of CIB members, all categories included, as at 31st December 2005 was 358 of which:

- 52 Full Members (FM),
- 202 Associate Members (AM), and
- 104 Individual Members (IM) respectively.

The figures for 2004 were 385 for the total number of Members of which:

- 53 FM
- 222 AM
- 110 for IM respectively.

In percentage, the membership loss in 2005 is 7.5% in total, and 2% for FM's, 10% for AM's and 6% for IM's respectively.

The repartition of the Membership in FM, AM and IM respectively in percentage is shown **Figure 1**. The percentage of AM, 56% out of the total membership, is 1 % lower compared to 2004.

From **Figure 2**, we observe a loss among FM, AM and IM as well. When considering the membership loss with respect to fee levels in 2005 as shown in **Figure 3**, a large number of cancellations is observed among AM in absolute terms. In relative terms, the loss is similar among FM and IM as well. From **Figure 3**, it appears amongst others that no new members have been registered in the 2 highest fee categories FM1 and FM2.

Figure 4 shows a loss of members during 2005 in Asia and most dramatically in Europe. Again, the lost in Europe confirms the trend over the past 5 years. **Figure 5**. Despite all the membership loss in Europe, the region still stands for 56% of CIB members as shown in **Figure 6**.

From **Figure 7**, we observe a net membership loss in all organisation types (Research, University, Industry and Other) in 2005, with the sharpest loss from the Researchers Organisations In **Figure 8** it is shown that for the first time in the past years, the loss in the Industry is less. University members now stand for more than half (54%) of all type of organisations as indicated by **Figure 9**.

Figure 10 shows the membership composition over the past 7 years 1999 – 2005. Conclusions from these data are: for FM’s a growth until in 2002 and after that a decline’ a continuous decline for AM’s since 2000 and for IM’s since 1999.

1. Membership Composition per Category

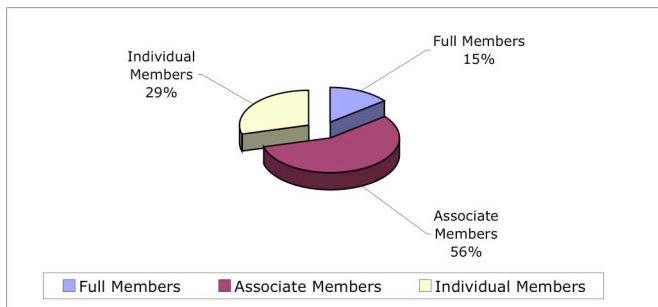


Figure 1: Membership Composition per Category as per 31-12-2005

The bar chart below shows new Members and cancellations of Membership per Membership Category for the year 2005.

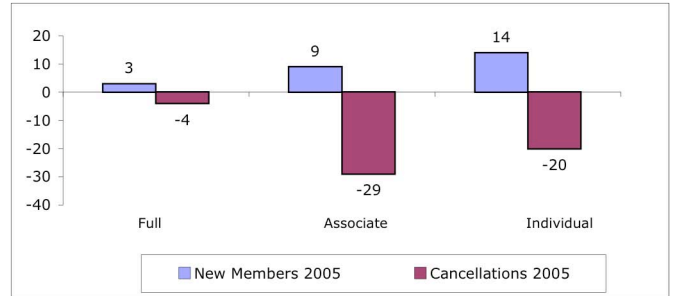


Figure 2: New Members and Cancellations of CIB Members per Membership Category for the Year 2005

The new Full Members in 2005 are a mixture of upgrades and downgrades in Membership Category:

- Construction Technology & Management Centre – Faculty of Civil Engineering – University of Technology Malaysia (upgrade from AM2 to FM3)
- KTH – Department of Civil and Architectural Engineering (downgrade from FM2 to FM3)
- TECHNION – Israel Institute of Technology – Faculty of Civil Engineering – National Building Research Institute (downgrade from FM2 to FM3)

The Full Members that cancelled in 2005:

- Institut für Bauforschung
- Building Research Establishment

2. Membership Development per Fee Level

The fee levels (In Euro and without possible country GNIpc related reductions) in parenthesis correspond to membership categories as follows: FM1 (€ 10.019), FM2 (€ 6.680), FM3 (€ 2.297), AM1 (€ 1.154), AM2 (€ 703) and IM (€ 229).

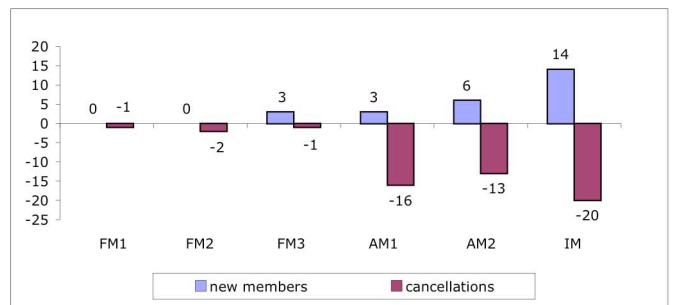


Figure 3: Membership Development per Fee Level in 2005



3. Geographical Membership Development



Figure 4: New and Cancelled Members in 2005 per Region



Figure 5: Net Loss per Region over the last three Years

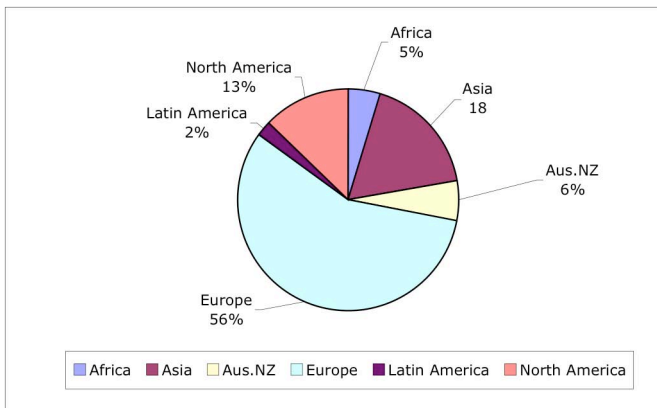


Figure 6: Proportional Composition of the CIB Membership per Region as per 31-12-2005

4. Membership Development per Type of Organisation



Figure 7: Membership Development per type of Organisation in 2005



Figure 8: Net loss per type of Organisations over the past three Years

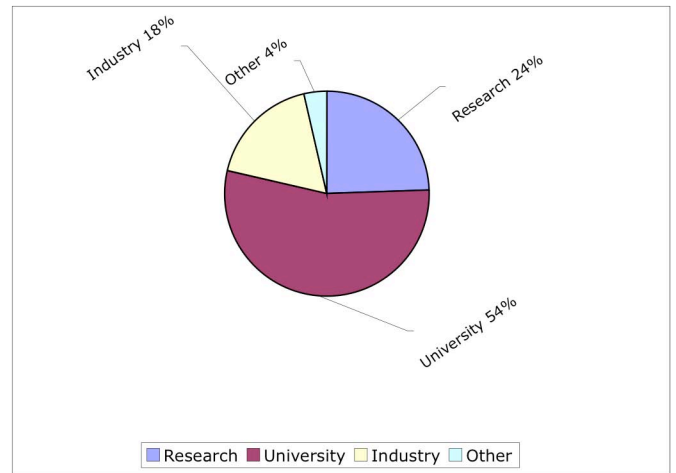


Figure 9: Proportional Composition CIB Membership by type of Organisations as of 31st December 2005 (by type of Organisation)

5. Membership Development over a Longer Period



Figure 10: CIB Membership Development 1999-2005

From the evolution during 1999 –2005 as shown in above **Figure 10**, it appears that CIB is continuously losing members regardless of membership categories (FM, AM and IM) for some years now.

Annex: Explanatory text to the Presented Data

Comparative data are presented in this document with respect to:

- Membership Categories
- Fee categories
- Geographical composition
- Type of organisations among the Full and Associate Members.

Membership Categories

Within CIB the following Membership Categories are distinguished:

- Full Members (FM)
- Associate Members (AM)
- Individual Members (IM)

Fee Categories

CIB distinguishes 6 Membership Fee Categories,

- 3 for Full Members
- 2 for Associate Members
- 1 Category Individual Member

Geographical Composition

The Geographical composition refers to the following regions:

- Africa
- Asia
- Australia/New Zealand
- Europe
- Latin America
- North America

Different Types of Organisational Members

Distinguished main types of Organisations (for Full and Associate Members) are:

- Research
- University
- Industry
- Other