



## CIB NEWS ARTICLE

International Council for Research and Innovation  
in Building and Construction

Providing a global network for international exchange and cooperation in research and innovation in building and construction, in support of an improved building process and of improved performance of the built environment.

January 2009

## CIB Membership Development in 2008

The Annual CIB Membership Development for 2008 is presented in this News article with some comparative data for the period 2006-2008.

An explanatory text to the presented data is included as an annex.

### Some General Conclusions

- For the second successive year the CIB Membership is increasing: the total net growth (= new members minus members lost) = 13 Members.
- Also for a second year in a row the biggest part of the total growth (net 7) originated from Europe. Specified: from Denmark 3 new Members and from Hungary and the United Kingdom respectively 4 and 5 new Members.
- From Asia we could welcome 14 new Members in total, out of which 6 from China.
- The whole of the net growth comes from Universities who have joined CIB as Associate Members.

After 6 successive years of Membership decline, CIB now seems to have found the way to growth again.

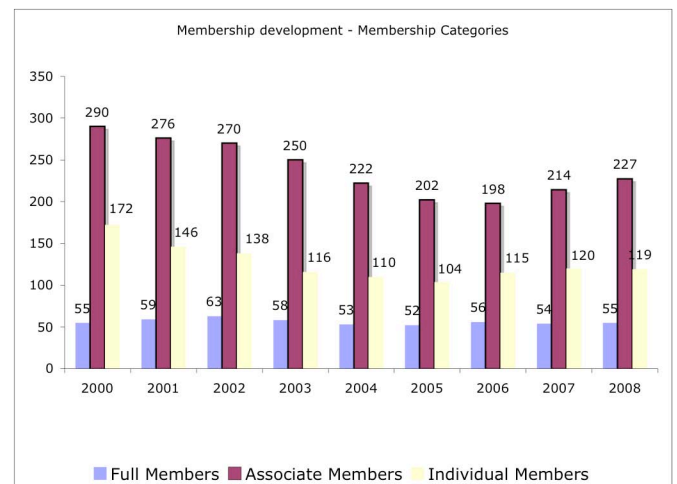
### Comments on Data presented in this Document

The total number of CIB Members in all Member Categories as at 31<sup>st</sup> December 2008 was 401 and can be divided as follows:

- 55 Full Members (FM), 54 Full Members in 2007
- 227 Associate Members (AM), 214 AM in 2007
- 119 Individual Members (IM), 120 IM in 2007

**Figure 1** shows the changes in the Membership composition as concerns Full, Associate and Individual Members over the last 9 years 2000 – 2008.

### 1. Membership Development over a longer Period

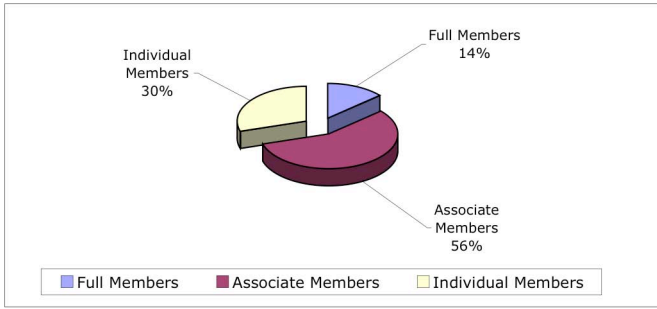


**Figure 1:** CIB Membership Development 2000-2008

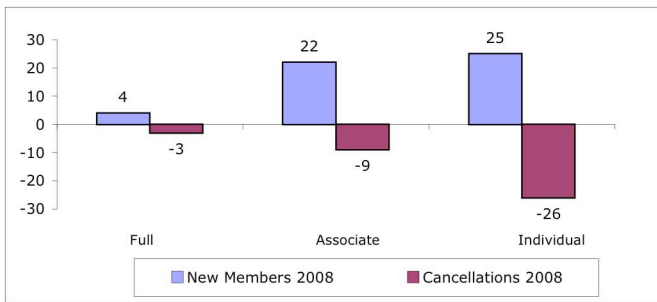
From the evolution during 2000 – 2008 as shown in above **Figure 10**, it appears that after a number of years with a declining Membership, CIB now is beginning to grow its Membership again and especially in the categories of Associate Members.



**2. Membership Composition per Category**



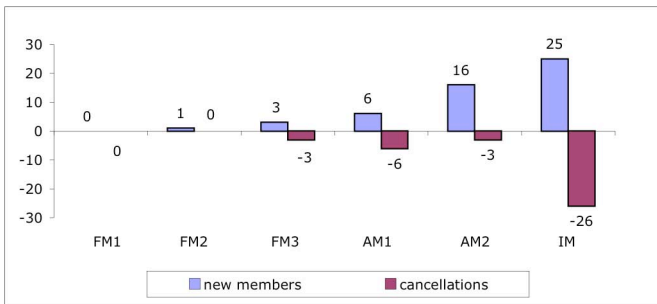
**Figure 2:** Membership Composition per Category as per 31-12-2008



**Figure 3:** New Members and Cancellations of CIB Members per Membership Category for the Year 2008

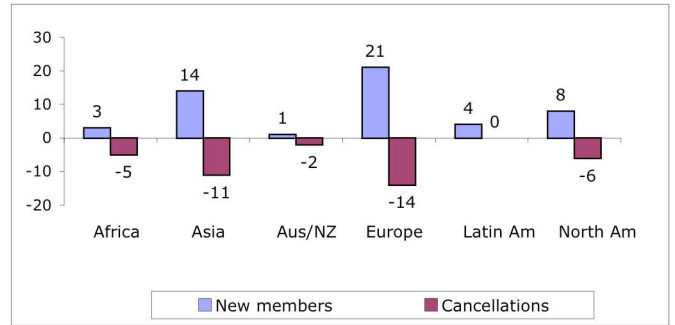
**3. Membership Development per Fee Level**

The fee levels in 2008 (In Euro and without possible country GNIpc related reductions) for each Membership Category were as follows: FM1: € 11.052, FM2: € 7.369, FM3: € 2.534, AM1: € 1.274, AM2: € 936 and IM: € 253.

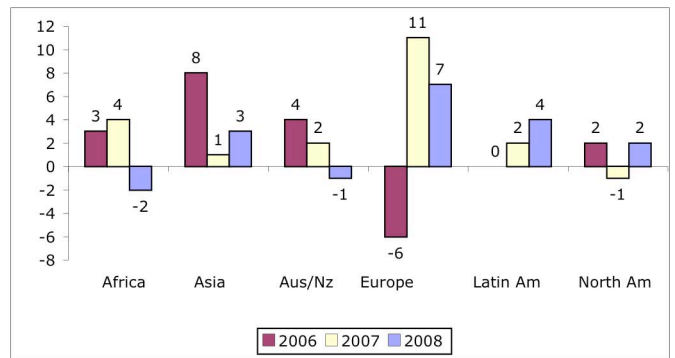


**Figure 4:** Membership Development per Fee Level in 2008

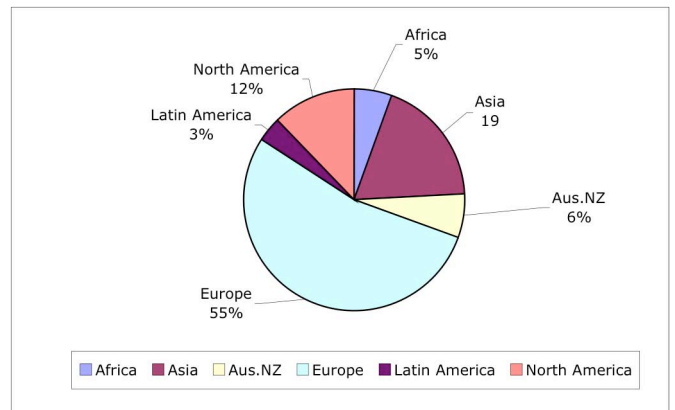
**4. Geographical Membership Development**



**Figure 5:** New and Cancelled Members in 2008 per Region



**Figure 6:** Net Growth and Loss per Region over the last three Years



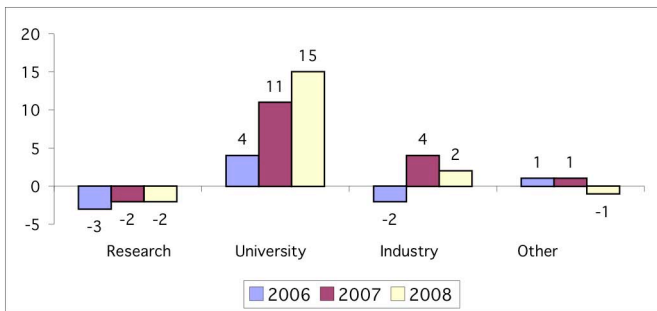
**Figure 7:** Proportional Composition of the CIB Membership per Region as per 31-12-2008



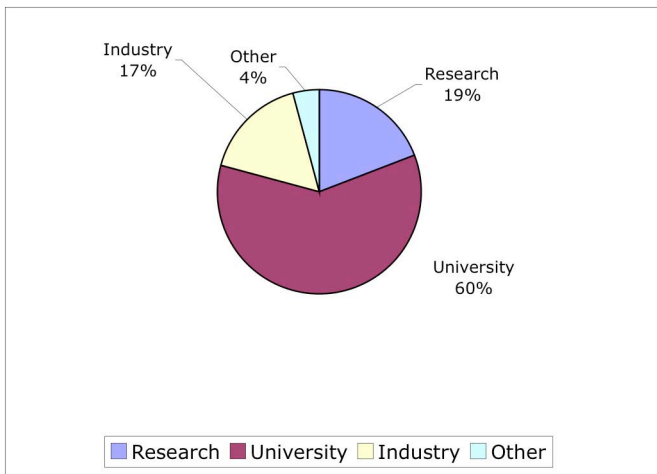
**5. Membership Development per Type of Organisation**



**Figure 8:** Membership Development per Type of Organisation in 2008



**Figure 9:** Composition per Type of Organisation over the past three Years



**Figure 10:** Proportional Composition CIB Membership by Type of Organisation as of 31st December 2008

**Annex: Explanatory text to the Presented Data**

Comparative data are presented in this document with respect to:

- Membership Categories
- Fee categories
- Geographical composition
- Type of organisations among the Full and Associate Members.

**Membership Categories**

Within CIB the following Membership Categories are distinguished:

- Full Members
- Associate Members
- Individual Members

**Fee Categories**

CIB distinguishes 6 Membership Fee Categories,

- 3 for Full Members (FM1/2/3)
- 2 for Associate Members (AM1/2)
- 1 Category Individual Member (IM)

**Geographical Composition**

The Geographical composition refers to the following regions:

- Africa
- Asia
- Australia/New Zealand
- Europe
- Latin America
- North America

**Different Types of Organisational Members**

Distinguished main types of Organisations (for Full and Associate Members) are:

- Research
- University
- Industry
- Other