



CIB NEWS ARTICLE

International Council for Research and Innovation
in Building and Construction

Providing a global network for international exchange and cooperation in research and innovation in building and construction, in support of an improved building process and of improved performance of the built environment.

January 2008

CIB Membership Development in 2007

The Annual CIB Membership Development for 2007 is presented in this News article with some comparative data for the period 2005-2007.

An explanatory text to the presented data is included as an annex.

Some General Conclusions

- After many years of loss in Membership and a first growth again in 2006 of 11 Members, 2007 ended with a growth of in total 19 Members.
- It is remarkable that most new Members in 2007 (30 of the in total 58) are from Europe. This includes as many as 12 new Members from the United Kingdom.

Comments on Data presented in this Document

The resulting total number of CIB Members, all Member Categories included, as at 31st December 2007 was 388, of which:

- 54 Full Members (FM),
- 214 Associate Members (AM) and
- 120 Individual Members (IM).

The figures for 2006 were 369 for the total number of Members, of which:

- 56 FM
- 198 AM
- 115 IM.

The FM, AM and IM Memberships as percentages of the total CIB Membership are shown in **Figure 1**.

In **Figure 2**, we see a substantial increase in Associate Members.

As shown in **Figure 3**, a comparative large number of new Members in category AM2 is observed (these are the Universities amongst the Associate Members).

Figure 4 shows an overall increase in all regions, except North America. After many years of losing Members in Europe, the year 2007 ended here with 30 new Members.

Figure 5 reflects the changes per region over the last three years.

Figure 6 shows Members per region per the end of 2007 as percentages of the total. The European Membership now constitutes 52% of the total CIB Membership.

Figure 7 and **Figure 8** show the developments per Type or Organisation in respectively 2007 and 2005 – 2007. We especially observe a net Membership growth in 2007 among both the Universities and the Industry.

Figure 9 shows the Type of Organisations as percentage of the total Organisational Members as per the end of 2007. Noteworthy is the high percentage (57%) for the University Members.

Figure 10 shows the changes in the Membership composition as concerns Full, Associate and Individual Members over the last 8 years 2000 – 2007.



1. Membership Composition per Category

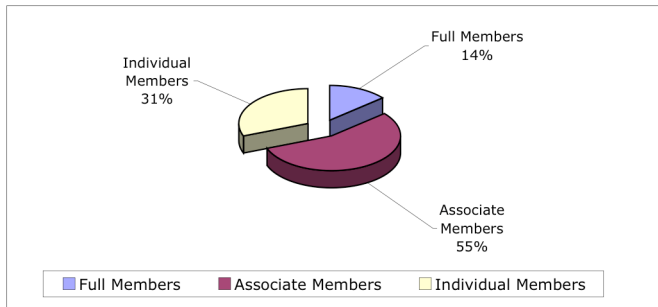


Figure 1: Membership Composition per Category as per 31-12-2007



Figure 2: New Members and Cancellations of CIB Members per Membership Category for the Year 2007

2. Membership Development per Fee Level

The fee levels in 2007 (In Euro and without possible country GNIpc related reductions) for each Membership Category were as follows: FM1: € 10.526, FM2: € 7.018, FM3: € 2.413, AM1: € 1.213, AM2: € 851 and IM: € 241.

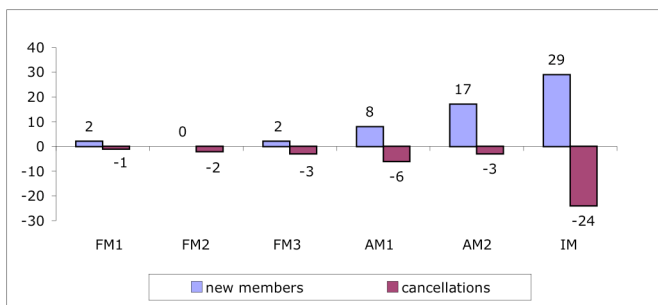


Figure 3: Membership Development per Fee Level in 2007

3. Geographical Membership Development

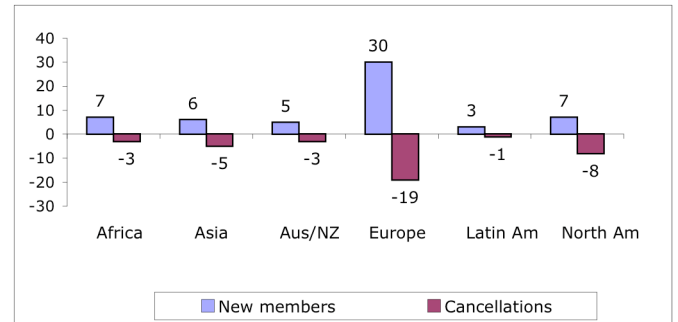


Figure 4: New and Cancelled Members in 2007 per Region

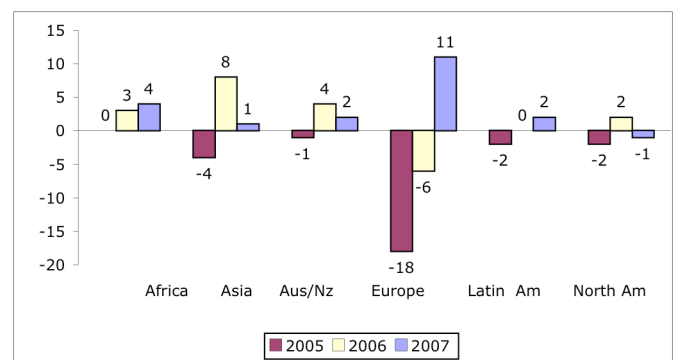


Figure 5: Net Growth and Loss per Region over the last three Years

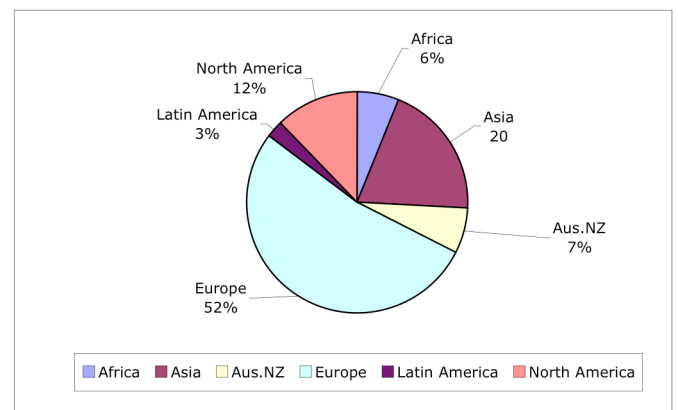


Figure 6: Proportional Composition of the CIB Membership per Region as per 31-12-2007



4. Membership Development per Type of Organisation

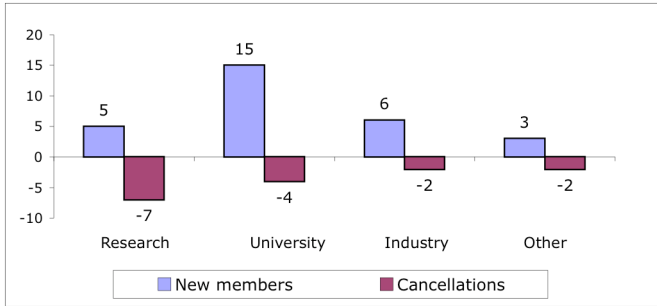


Figure 7: Membership Development per Type of Organisation in 2007



Figure 8: Composition per Type of Organisation over the past three Years

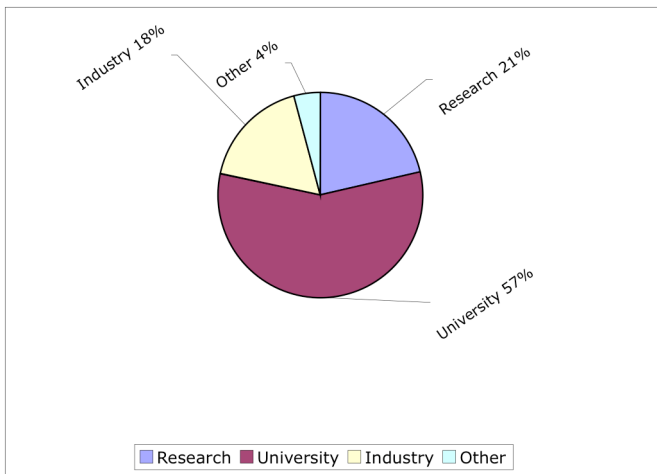


Figure 9: Proportional Composition CIB Membership by Type of Organisation as of 31st December 2007

5. Membership Development over a longer Period

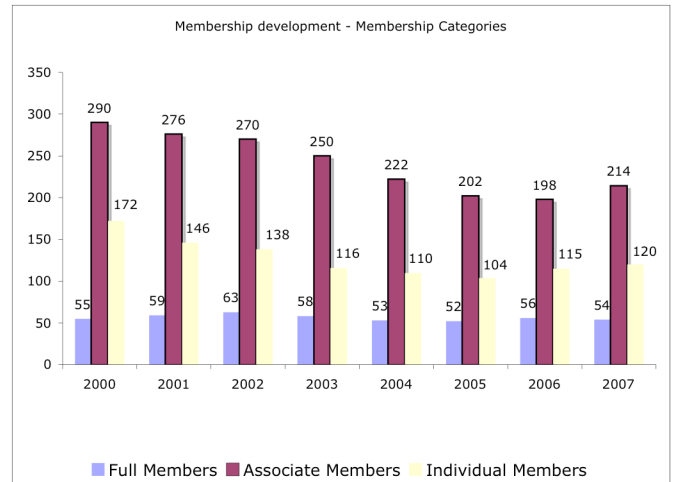


Figure 10: CIB Membership Development 2000-2007

From the evolution during 2000 – 2007 as shown in above **Figure 10**, it appears that after a number of years with a declining Membership, CIB now is beginning to grow its Membership again and especially in the categories of Associate and Individual Members.

**Annex: Explanatory text to the Presented Data**

Comparative data are presented in this document with respect to:

- Membership Categories
- Fee categories
- Geographical composition
- Type of organisations among the Full and Associate Members.

Membership Categories

Within CIB the following Membership Categories are distinguished:

- Full Members
- Associate Members
- Individual Members

Fee Categories

CIB distinguishes 6 Membership Fee Categories,

- 3 for Full Members (FM1/2/3)
- 2 for Associate Members (AM1/2)
- 1 Category Individual Member (IM)

Geographical Composition

The Geographical composition refers to the following regions:

- Africa
- Asia
- Australia/New Zealand
- Europe
- Latin America
- North America

Different Types of Organisational Members

Distinguished main types of Organisations (for Full and Associate Members) are:

- Research
- University
- Industry
- Other