



INTERNATIONAL COUNCIL FOR RESEARCH AND INNOVATION IN BUILDING AND CONSTRUCTION

INFORMATION

February 2005

From the General Secretariat

CIB Membership Development of the Year 2004

The Annual CIB Membership Development for 2004 is presented in this News article with some comparative data for the period 2002-2003. Some comments on the presented data are made after an additional comparison with the News article "Membership Development 2003" (can be found on the CIB website [here](#)).

An explanatory text to the presented data is included as an annex.

Some General Conclusions

- CIB has now been losing members for the 5th consecutive year, with exceptionally high losses in 2003 and 2004.
- Most membership cancellations have been registered in Europe.
- In 2004, for the second consecutive year, we registered a net loss among the membership category Full Members (FM).
- A substantial number of organisations under the membership type "Industry" left CIB in 2004

As described last year, the trend can partly be explained by the following:

- The worldwide economic recession has resulted in re-orientations and cuts in research funding for many organisations active in Research in Building and Construction.
- In Europe, the EU is now funding International Networks, sometimes with objectives similar to CIB's.
- Finally, cancellations often take place in organisations where only 1 person (or a few people) are active in CIB. In many cases, this person has been CIB member for several decades and after his retirement, the

membership is not renewed. In other cases, the cancellation takes place when the only active CIB member changes organisation.

- Organisational changes and new leadership were also mentioned as direct consequence for terminations.

The same trends seem to be still prevailing among International Research and/or Networking Organisations, similar to CIB.

Some positive observations:

- Despite an annual fee increase of 10% only for the membership category AM2 (Special Associate Member level 2 for Universities) as decided by the General assembly 2001, no higher rate of cancellations have been registered among Universities.
- A slight increase of membership has been registered in Africa and the membership remains stable in Latin and North America as well as in Australia/New Zealand.

Future Perspectives

The CIB Strategy 2005-2010 approved by the Board, is currently being turned into an action plan, including a Membership Retention and Acquisition programme in 2005-2007. The Membership Acquisition Programme will focus on some targets including China, Universities in the USA, French speaking countries and Turkey as a potential gate to the Middle East.

As part of the Membership Retention activities, services to members will be improved and augmented. The CIB website is currently undergoing a complete redesign. The new website will be online within the coming months.

The CIB Student Chapters' activities are gaining increasing momentum. It is expected that they will lead to a change in the age structure of the CIB membership and contribute to a positive membership development in the future.

We must remain aware of the fact that these measures will produce noticeable effects the earliest by 2007-2008.

Comments on Data presented in this Document

The total number of CIB members, all categories included, as at 31st December 2004 was 385 of which:

- 53 Full Members (FM),
- 222 Associate Members (AM), and
- 110 Individual Members (IM) respectively.

The figures for 2003 were 424 for the total number of Members of which:

- 58 FM
- 250 AM
- 116 for IM respectively.

In percentage, the membership loss in 2004 is 9% in total, and 9%, 11% and 5% for FM, AM and IM respectively.

The repartition of the Membership in FM, AM and IM respectively in percentage is shown **Figure 1**. It appears that the percentage of AM, 57% out of the total membership, remains unchanged over the past few years.

From **Figure 2**, we observe a net loss among FM, AM and IM as well. When considering the membership loss with respect to fee levels in 2004 as shown in **Figure 3**, a large number of cancellations is observed among AM in absolute terms. In relative terms, the loss is similar among FM and IM as well. From **Figure 3**, it appears that no new members have been registered in the 2 highest fee categories FM1 and FM2.

Figure 4 shows a net loss of members during 2004 in Asia and most dramatically in Europe. Again, the lost in Europe confirms the trend over the past 5 years. **Figure 5** depicts some positive data: the slight increase in Africa in 2004 and the stable membership in Latin America. Membership cancellation is decreasing in North America and in Australia/New Zealand. Despite all the membership loss in Europe, the region still stands for 59% of CIB members as shown in **Figure 6**.

From **Figure 7**, we observe a net membership loss in all organisation types (Research, University, Industry and Other) in 2004, with the sharpest loss from the Industry. In **Figure 8**, it is shown that for the first time in the past years, the loss in the Industry is exceptionally high.

University members now stand for more than half (52%) of all type of organisations as indicated by **Figure 9**.

1. Membership Composition per Category

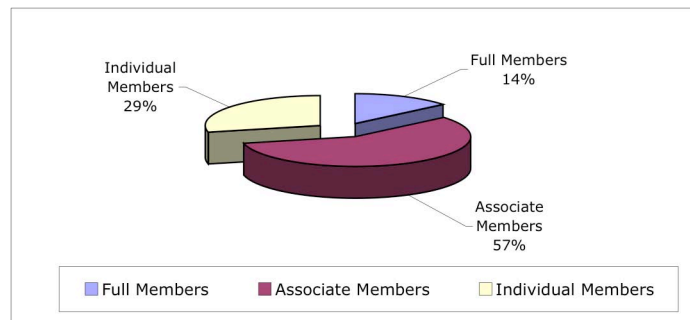


Figure 1: Membership Composition per Category

The bar chart below shows new Members and cancellations of Membership per Membership Category for the year 2004.

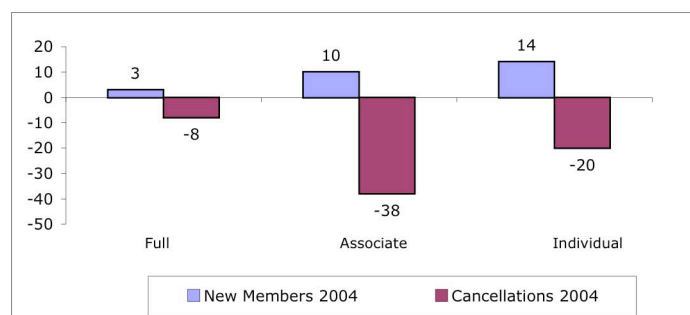


Figure 2: New Members and Cancellations of CIB Members per Membership Category for the Year 2004

The new Full Members in 2004 are:

- NHBC - National House Building Council, Amersham, United Kingdom (upgrade from AM)
- CRC Construction Innovation, Brisbane, Australia
- University of Dar es Salaam, Dar es Salaam, Tanzania

The Full Members that cancelled in 2004:

- Vastukala Engineers and Architects, Kathmandu, Nepal
- HIS - Institute for Housing and Urban Development Studies, Rotterdam, The Netherlands
- SB - Swedish Building Centre, Stockholm, Sweden
- KICT - Korean Institute of Construction Technology, Kyengi-Do, Korea
- Building Center of Japan, Tokyo, Japan
- Swiss Institute for the Promotion of Safety & Security, Zürich, Switzerland
- China Building Technology Development Centre, Beijing, China
- HBRC - Housing & Building Research Center, Cairo, Egypt



For some individual Members, the reason for cancelling membership was sometimes due to the fact that they found out that the organisation or university they are employed at was already a Member of CIB.

2. Membership Development per Fee Level

The fee levels in parenthesis correspond to membership categories as follows: FM1 (9.359), FM2 (6.240), FM3 (2.114), AM1 (1.063), AM2 (581) and IM (210).

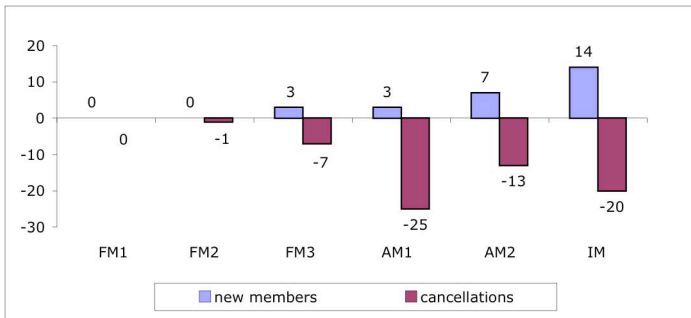


Figure 3: Membership Development per Fee Level in 2004

3. Geographical Membership Development

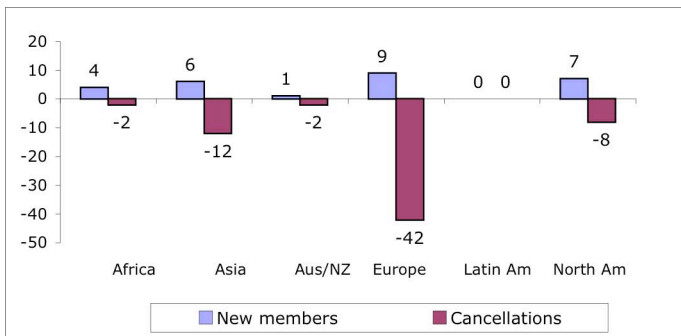


Figure 4: New and Cancelled Members in 2004 per Region

The chart below shows the net loss per region over the past three years



Figure 5: Net Loss per Region over the last three Years

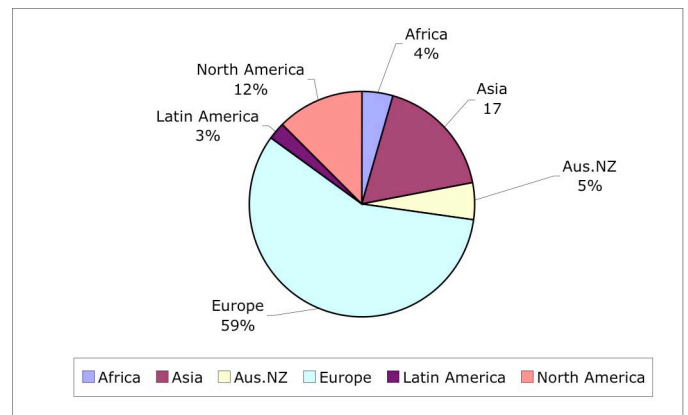


Figure 6: Proportional Composition of the CIB Membership per Region as per 31-12-2004

4. Membership Development per Type of Organisation

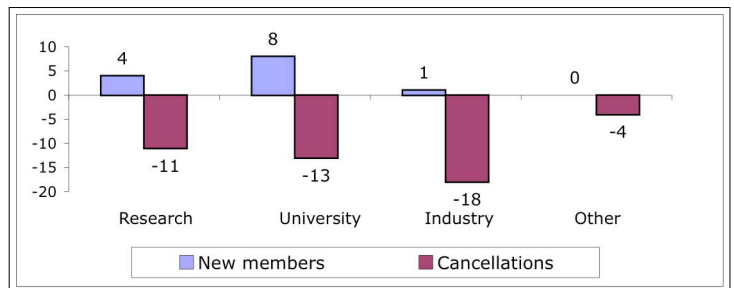


Figure 7: Membership Development per type of Organisation in 2004

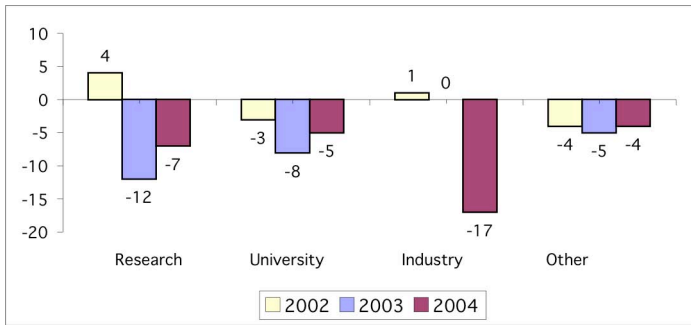


Figure 8: Net loss per type of Organisations over the past three years

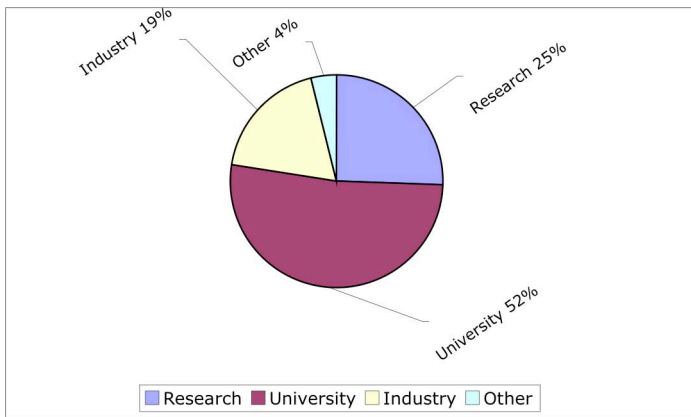


Figure 9: Proportional Composition CIB Membership by type of Organisations as of 31st December 2004 (by type of Organisation)

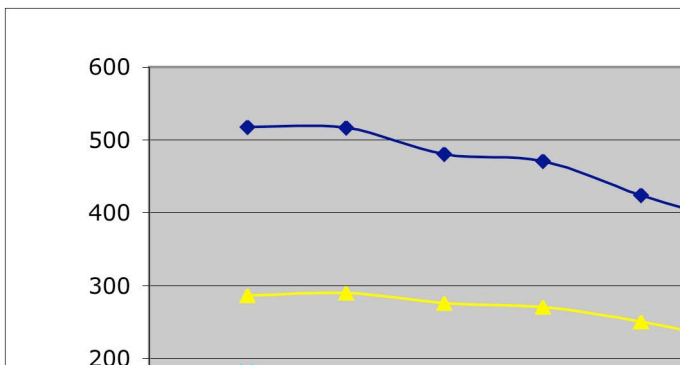


Figure 10: CIB Membership Development 1999-2004

From the evolution during 1999 –2004 as shown in **Figure 10**, it appears that CIB is continuously losing members regardless of membership categories (FM, AM and IM)

Annex: Explanatory text to the Presented Data

Comparative data are presented in this document with respect to:

- Membership Categories
- Fee categories
- Geographical composition
- Type of organisations among the Full and Associate Members.

Membership Categories

Within CIB the following Membership Categories are distinguished:

- Full Members (FM)
- Associate Members (AM)
- Individual Members (IM)

Fee Categories

CIB distinguishes 6 Membership Fee Categories,

- 3 for Full Members
- 2 for Associate Members
- 1 Category Individual Member

Geographical Composition

The Geographical composition refers to the following regions:

- Africa
- Asia
- Australia/New Zealand
- Europe
- Latin America
- North America

Main types of Organisations (for Full and Associate Members):

- Research
- University
- Industry
- Other