



50th Anniversary
1953 - 2003

INTERNATIONAL COUNCIL FOR RESEARCH AND INNOVATION IN BUILDING AND CONSTRUCTION

INFORMATION

April 2003

From the CIB General Secretariat

CIB Membership Development for the year 2002 with Comparative Data over the period 2000-2001

Comparative data are presented in this news article with respect to:

- Membership Categories
- Fee categories
- Geographical composition
- Type of organisations among the Full and Associate Members.

Membership Categories

Within CIB the following Membership Categories are distinguished:

- Full Members (FM)
- Associate Members (AM)
- Individual Members (IM)

Fee categories

CIB distinguishes 6 Membership Fee Categories,

- 3 for Full Members
- 2 for Associate Members
- 1 Category Individual Member

Geographical composition

The Geographical composition refers to the following regions:

- Africa
- Asia
- Australia/New Zealand
- Europe
- Latin America
- North America

Main types of Organisations (for Full and Associate Members):

- Research
- University

- Industry
- Other

Executive Summary:

The total number of Full, Associate, and Individual Members as per 31st December 2002 were 63, 270 and 138 respectively.

From Figure 1, it appears that nearly 60% of members are AM. Figure 2 shows a decrease in the total number of members in 2002, in particular among AM and IM, but luckily with an increase in FM. Figure 3 also shows the decrease in AM and IM when the fee categories are considered.

Figure 4 presents a net loss of members during 2002. The net loss in membership in the year 2002 is less substantial than in 2001. The year 2002 shows a loss of Membership in the regions North America and Australia/New Zealand for the first time. Europe shows a net loss of members during three consecutive years. The loss is however not as dramatic as during 2001 as shown in Figure 5. The total percentage of members in Europe, after decreasing for three consecutive years, amounts now to 60% of all members as shown in Figure 6.

From Figure 7, we observe a net member loss in the categories University and Other, and a member increase in the category Research for 2002. Figure 8 underlines the net loss of members within those categories for two consecutive years. Following these decreases, university members stand now for only 46% of all type of organisations as indicated by Figure 9.

1. Membership Categories

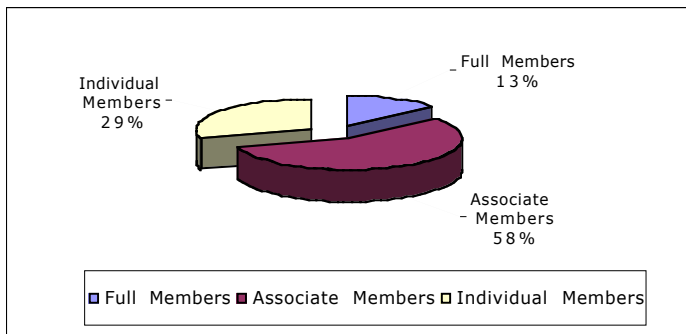


Figure 1: Membership composition per category as per 31st December 2002

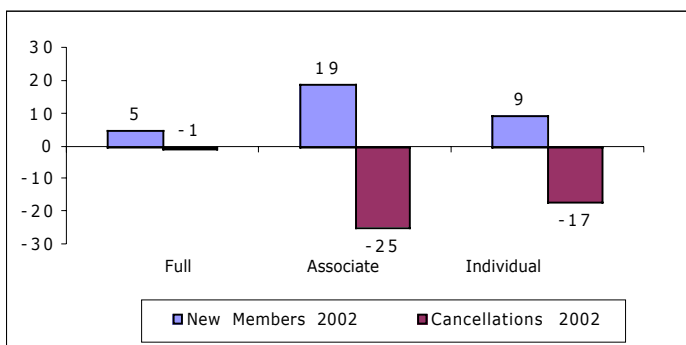


Figure 2: Membership development (New Members in blue and Cancellations in pink) per Category for the year 2002.

It can be concluded that for the year 2002, in the Categories of Associate and Individual Members, the loss is substantial. Please note that most of these cancellations were in fact terminations due to non-payment of fees for 2 consecutive years. A positive aspect is the net growth in the Category of Full Members (see details below).

Listing new/cancelled Full Members

Upgrades

The following Full Members have chosen to upgrade from their Associate Membership:

- Building Division - Department of Public Works, Queensland, Australia
- HBG - Hollandsche Beton Groep nv, The Netherlands

New Applications

The Three following organisations applied for Full Membership in the year 2002:

- Urban Renewal Association of Japan; Japan
- Construction Industry Development, South Africa
- National Institute for Land and Infrastructure Management - Ministry of Land, Infrastructure and Transport, Japan

Cancellations

Byggdok - Swedish Institute of Building Documentation, Sweden

Reasons for cancellation

Due to non-payment of fees for two consecutive years, 14 Members have been terminated by CIB, i.e. no Full Members, 8 Associate Members, 6 Individual Members

In total 43 Members cancelled their Membership. In certain cases no specific reason for termination was given. For your information, a short list of most common known reasons (other than the reason that relate to upgrades or downgrades) for Membership cancellation is given below.

Reasons for cancellation concerning Full Members and Associate Members:

- the most active and in some cases the only contact moved to another organisation or retired. In the year 2003 it is planned to more actively contact colleagues in above-mentioned situation and try to convince them of CIB Membership.
- change of scope
- financial situation

Reasons for cancellation concerning Individual Members:

- change of job
- financial problems
- retirement
- termination by CIB due to non-communication

2. Fee Categories

CIB distinguishes 6 Membership Fee Categories. As detailed on the X-axis in Figure 3, the first 3 fee categories from the left are for Full Members, the 2 following for Associate Members and the last one is for Individual Member,

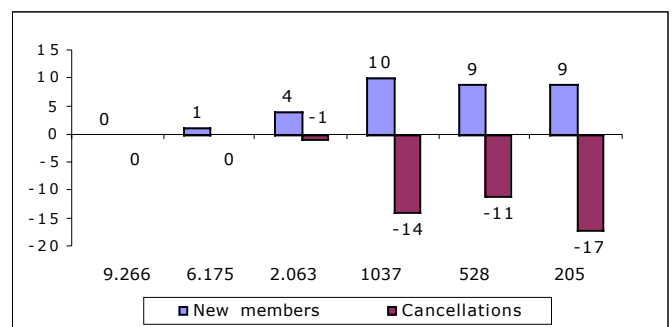


Figure 3: Number of new members and cancellations per fee category in 2002

3. Geographical composition

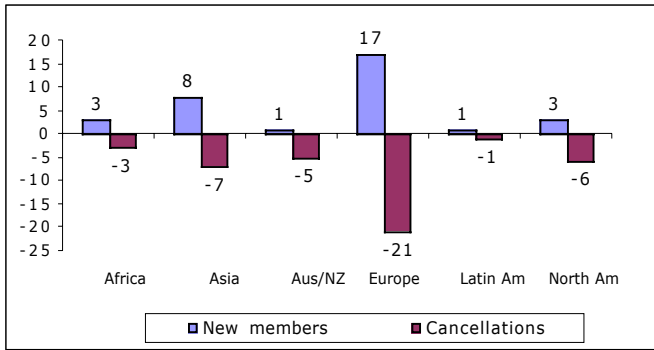


Figure 4 : New CIB Members and cancelled Members over 2002 for each of the main regions

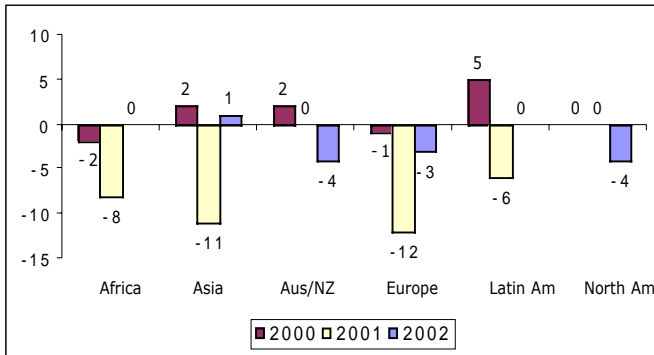


Figure 5: Net growth per region over the last three years

Note: CEMEX Central S.A. de C.V. Mexico (North America), moved to Europe, to Switzerland.

The net-loss in membership in the year 2002 is less substantial than in 2001. The year 2002 shows a loss of Membership in the regions North America and Australia/New Zealand for the first time. Europe shows a net loss of members during three years.

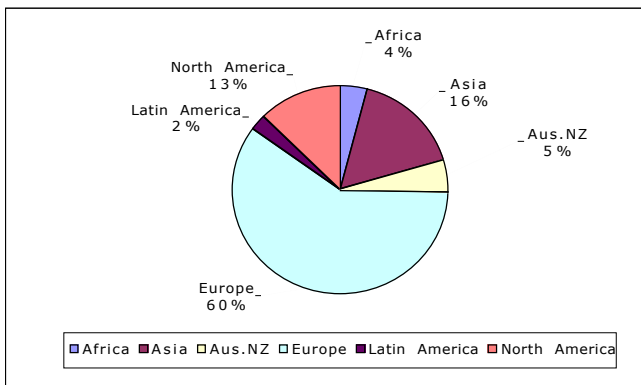


Figure 6: Proportional composition of the CIB Membership per region as per 31-12-2002.

As shown earlier, the percentage of Members in Europe is decreasing

4. Type of organisations

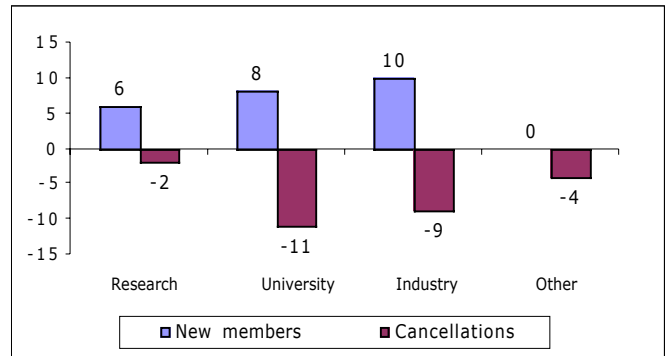


Figure 7: Membership development per Type of Organisation in 2002.

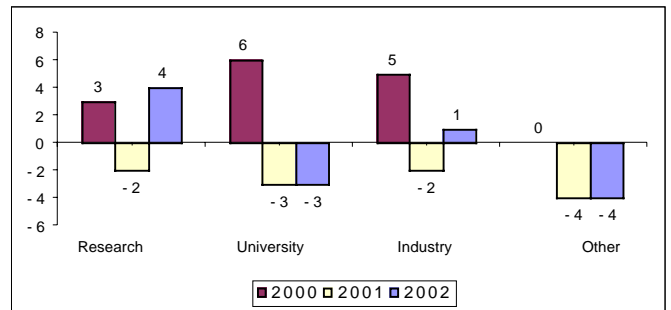


Figure 8: Net growth per Type of Organisation over the past three years

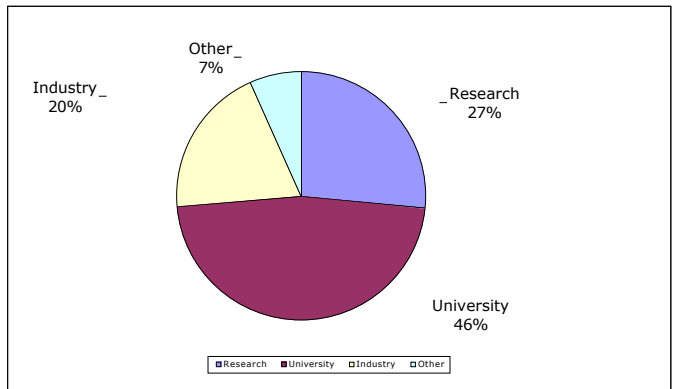


Figure 9: Proportional composition of the organisational CIB Membership as per December 31, 2002, by type of Organisation